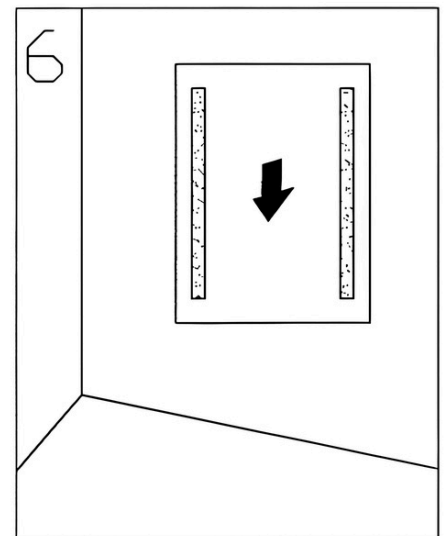
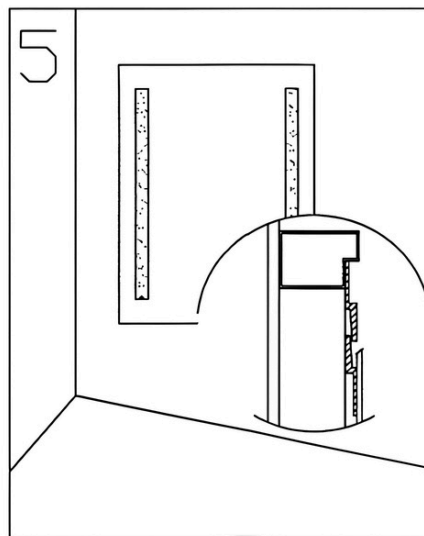
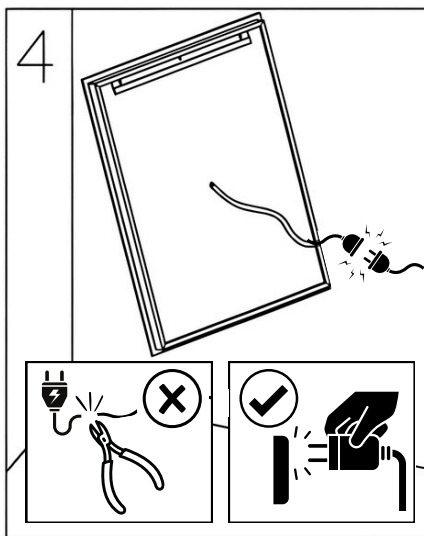
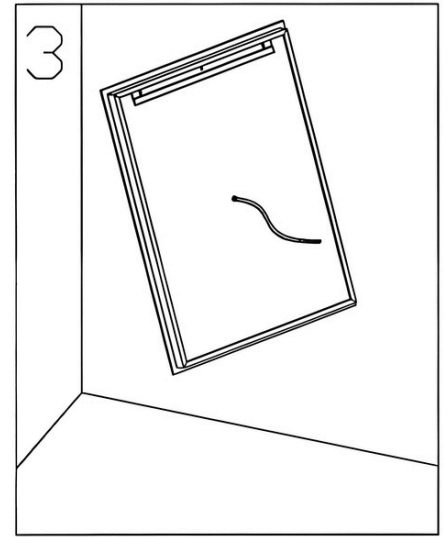
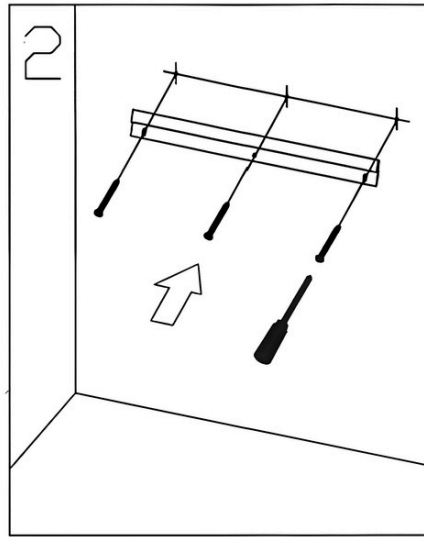
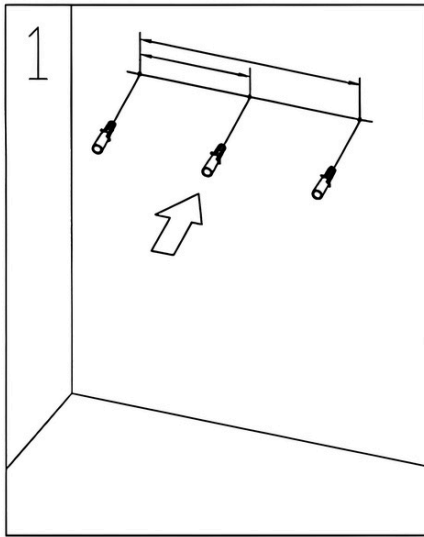


The Instruction of LED Mirror



- **Secure Mounting:**
 - Ensure the mirror is securely screwed to the wall.
 - Use provided wall anchors and screws for a stable installation.
 - Confirm that the mirror is level to achieve a balanced and polished look.
- **Electrical Connection:**
 - Do not cut the wire plug; connect it intact to the designated socket.
 - For safety, hire a qualified electrician if you're unsure about electrical installations.
- **Switch Operation:**
 - Keep the mirror switch turned off when the mirror is not in use.
 - This preserves the lifespan of the LED components and ensures energy efficiency.
- **Cleaning Guidelines:**
 - Always use a soft, scratch-proof cloth or a gentle paper towel for cleaning.
 - Avoid abrasive materials or harsh chemicals that may damage the mirror surface.
 - Gently wipe the mirror to maintain its clarity and pristine appearance.